



CliniClue[®] Xplore

Additional Tools

David Markwell

The Clinical Information Consultancy Ltd (CIC Ltd)

www.cliniclue.com / www.clininfo.co.uk



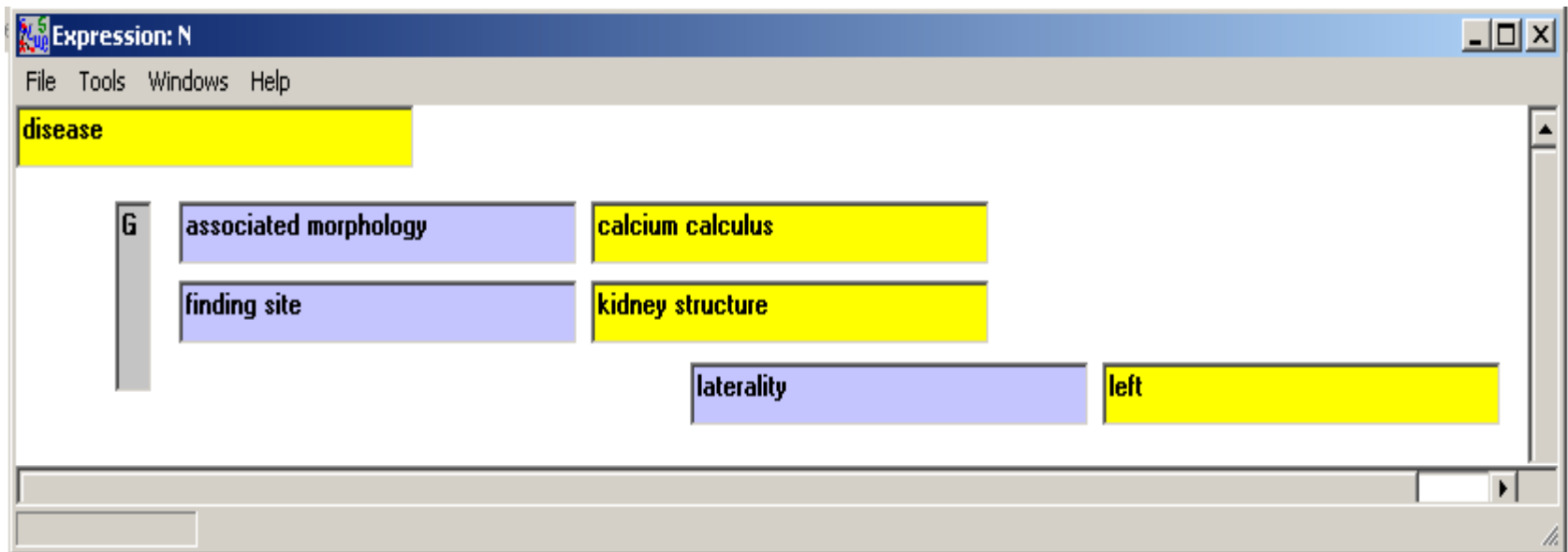
Other CliniClue tools and features

- Graphic view
 - Hierarchical ancestor
 - Expressions
- Expression transformer
 - Compares post-coordinated expressions
- Drag and drop options from CliniClue
 - Results depend on whether shift of control key is pressed
 - Configurable via the layout editor
- CliniClue API
 - MS Excel® and HTML Samples in the 'assist' subfolder of the CliniClue installed folder



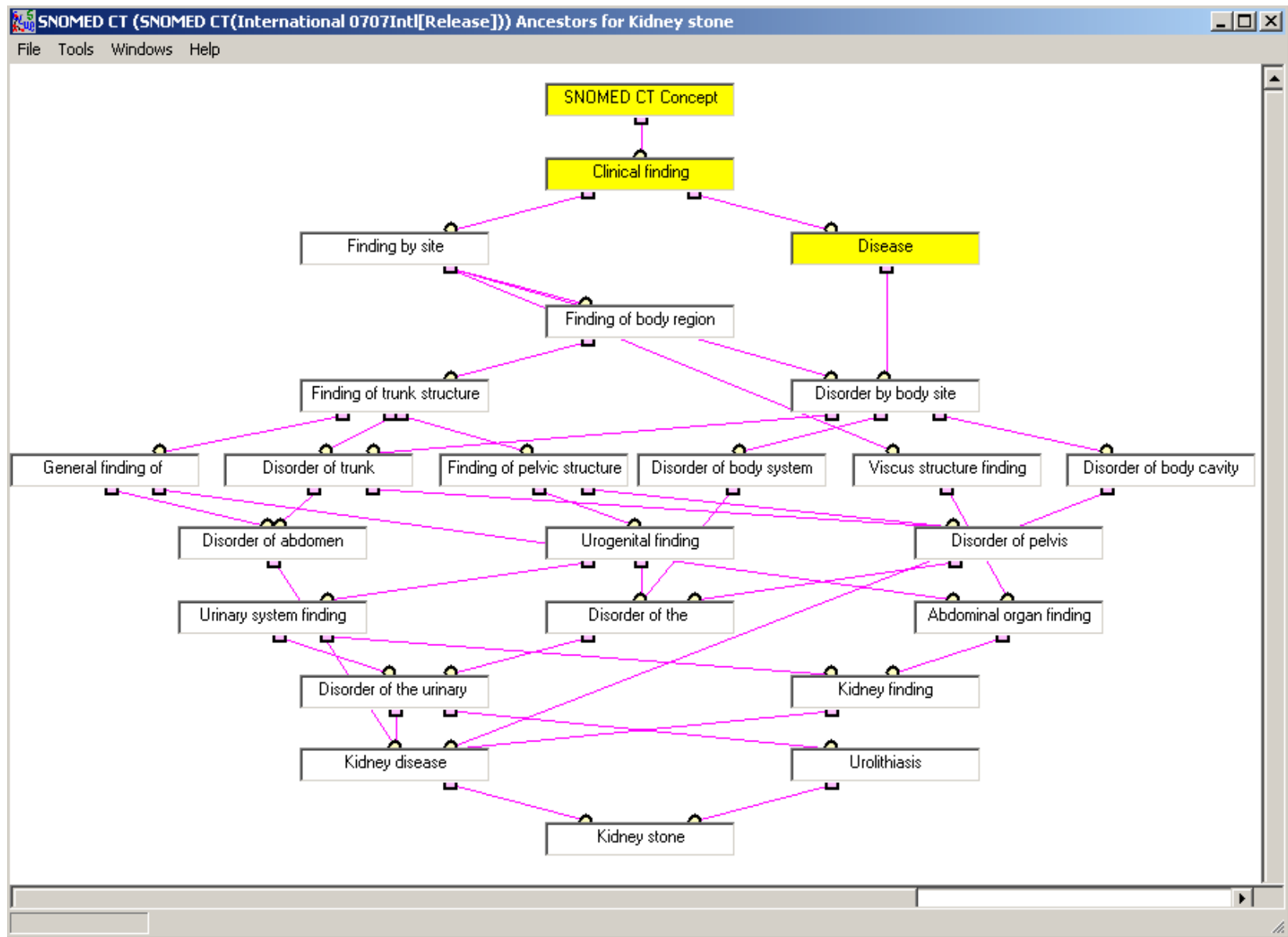


Graphic view - expression





Graphic view - hierarchy





Expression transformer – comparing alternative input expressions

The screenshot shows the 'Expression Transformer' application window. It is divided into four main sections: two input fields, a transformation control panel, and two output fields.

Left Input: 95570007|kidney stone; |
116676008|associated morphology|=89753006|calcium calculus|

Right Input: 427649000|calcium renal calculus|

Transform Panel:
Component: Expression (dropdown)
Transform: Normal form - with con (dropdown)
Display: Compositional (all) (dropdown)
Options: Html, Edit, Caption, Use external macro file

Left Output:

```
243796009 | situation with explicit context | :  
{246090004 | Associated finding | =  
  {64572001 | disease | :  
    {116676008 | associated morphology | =  
      89753006 | calcium calculus |  
      ,363698007 | finding site | = 64033007 |  
        kidney structure | }  
  }  
},408729009 | finding context | = 410515003 | known  
present |  
,408731000 | temporal context | = 410512000 |  
current or specified |  
,408732007 | subject relationship context | =  
410604004 | subject of record | }
```

Right Output:

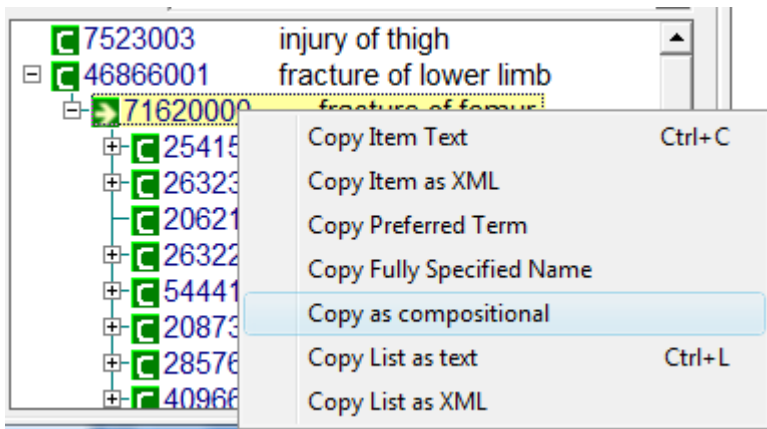
```
243796009 | situation with explicit context | :  
{246090004 | Associated finding | =  
  {64572001 | disease | :  
    {116676008 | associated morphology | =  
      89753006 | calcium calculus |  
      ,363698007 | finding site | = 64033007 |  
        kidney structure | }  
  }  
},408729009 | finding context | = 410515003 | known  
present |  
,408731000 | temporal context | = 410512000 |  
current or specified |  
,408732007 | subject relationship context | =  
410604004 | subject of record | }
```

Both output fields are labeled 'Equivalent' at the bottom.



Copy and paste options

Right click on item in a list and select the format to copy to clipboard



- Copy as text (if Id visible in list)

71620000 fracture of femur

- Copy as XML

```
<concept id="71620000" status="0"
ctv3id="XA0HC" snomedId="DD-
13100" isPrimitive="0"
ckey="{d9e4ad43-a514-434e-
80f3-3d44757af07a}#71519"
fullySpecifiedName="fracture of
femur (disorder)"></concept>
```

- Copy Preferred Term

fracture of femur

- Copy Fully Specified Name

fracture of femur (disorder)

- Copy as Compositional

71620000 | fracture of femur |



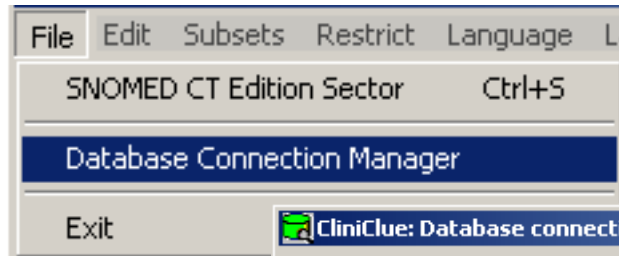
Using CliniClue[®]

Optional Database Connections

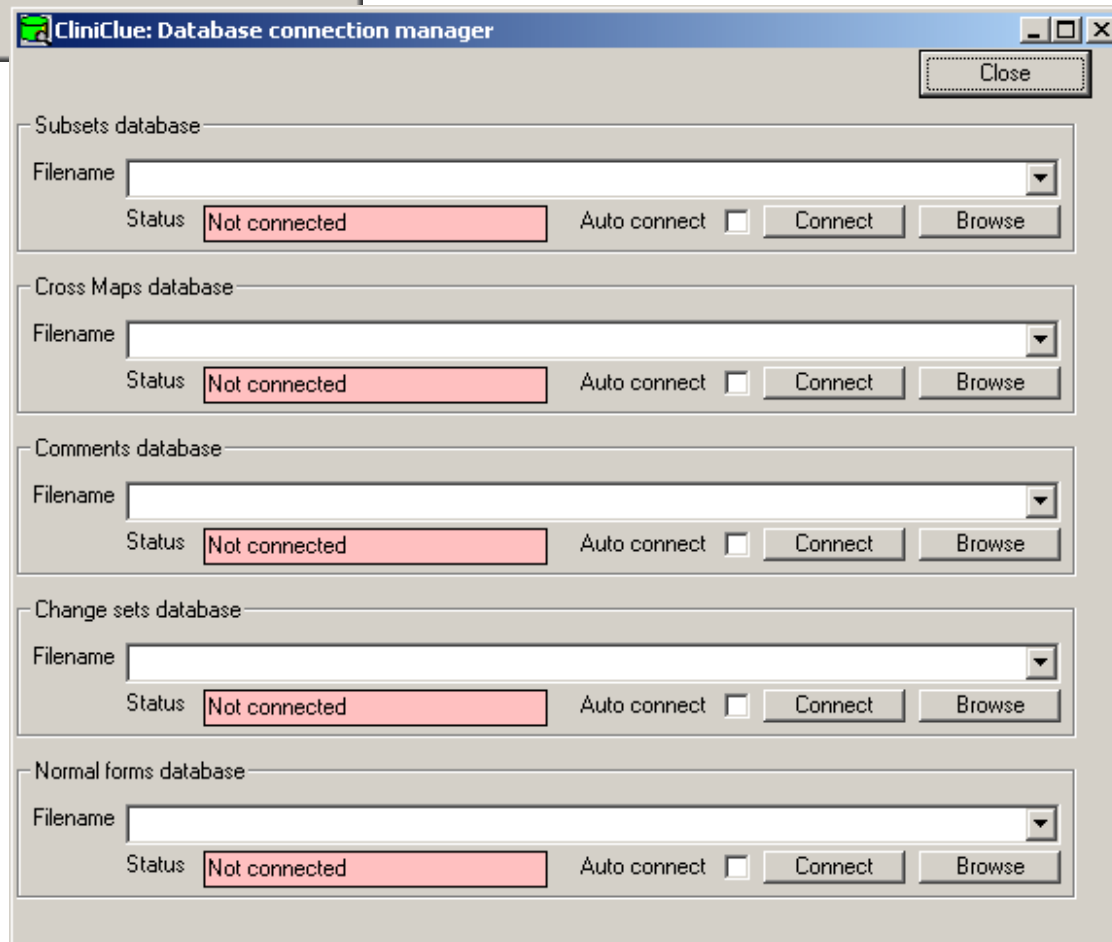


CliniClue

External database connections (optional)



Enable CliniClue to access additional information





CliniClue

External database connections (optional)

- Check 'Auto-connect' so CliniClue opens this database automatically each time the browser is loaded

The screenshot shows the 'CliniClue: Database connection manager' window with the following settings:

| Database Name | Filename | Status | Auto connect | Connect | Browse |
|-----------------------|------------------------|---------------------|-------------------------------------|---------|--------|
| Subsets database | | Not connected | <input type="checkbox"/> | Connect | Browse |
| Cross Maps database | resources\crossmap.mdb | Connected - checked | <input checked="" type="checkbox"/> | Connect | Browse |
| Comments database | | Not connected | <input type="checkbox"/> | Connect | Browse |
| Change sets database | | Not connected | <input type="checkbox"/> | Connect | Browse |
| Normal forms database | | Not connected | <input type="checkbox"/> | Connect | Browse |



Beyond CliniClue[®] Xplore

Additional options



CliniClue Xplore – strategic direction

- A continuing commitment to a fast, functional and free SNOMED CT browser
 - CliniClue Xplore

plus ...

- A response to requests to provide for people and organisations who need more
 - CliniClue Xtra
 - CliniClue Xtend
 - CliniClue Xploit
 - CliniClue Xplain



CliniClue for the new decade

- CliniClue Xplore
 - The freeware browser
- CliniClue Xtra
 - Additional package of features for individual users
- CliniClue Xtend
 - Content and language extensibility for IHTSDO Members and Affiliates
- CliniClue Xplain
 - Subscription based online webinars
- CliniClue Xploit
 - API documentation and support for add-on developers



CliniClue Xtend

- ClueData builder allowing Extensions to be made accessible using CliniClue Xplore
 - Aimed at IHTSDO and other organisation that develop SNOMED CT Extensions
 - Wizard based design makes it easy to build data from standard SNOMED CT distribution formats including support for:
 - Concepts, Descriptions, Relationships, Subsets, Refsets & CrossMaps
 - Once converted to ClueData the Extensions can be distributed to allow use or review by a wide community of users
- With CliniClue Xplore user-interface translation editor

Available now!

Download product sheet now from http://www.cliniclue.com/cliniclue_xtend



CliniClue Xtra

- Add-on package for CliniClue Xplore
 - Aimed at end-users with additional requirements
 - Additional tools that make use of CliniClue but go beyond simply viewing SNOMED CT content
- CliniClue Xtra will include:
 - Editing constraints, subset and refsets
 - Editing and saving alternative browser layouts
 - Managing comments on SNOMED CT components
 - Importing Subsets so they can be used by CliniClue Xplore



CliniClue Xploit

- A subscription based package for people and organisations wishing to produce their own customised add-ons that exploit the SNOMED CT terminology server at the heart of CliniClue Xplore
- Includes
 - CliniClue Xplore API documentation
 - Example add-ons that use the API and demonstrate its most useful features
 - The opportunity to attend on-line webinar sessions on the API
- Up to 4 hours of dedicated email/phone support add-on customisation



Trademark Acknowledgements

- **CliniClue** is a Registered Trademark of the Clinical Information Consultancy Ltd
- **SNOMED, SNOMED CT, SNOMED Clinical Terms** and **IHTSDO** are Registered Trademarks of the International Health Terminology Standards Development Organisation
- **MS Access** and **MS Excel** are Registered Trademarks of Microsoft Corporation